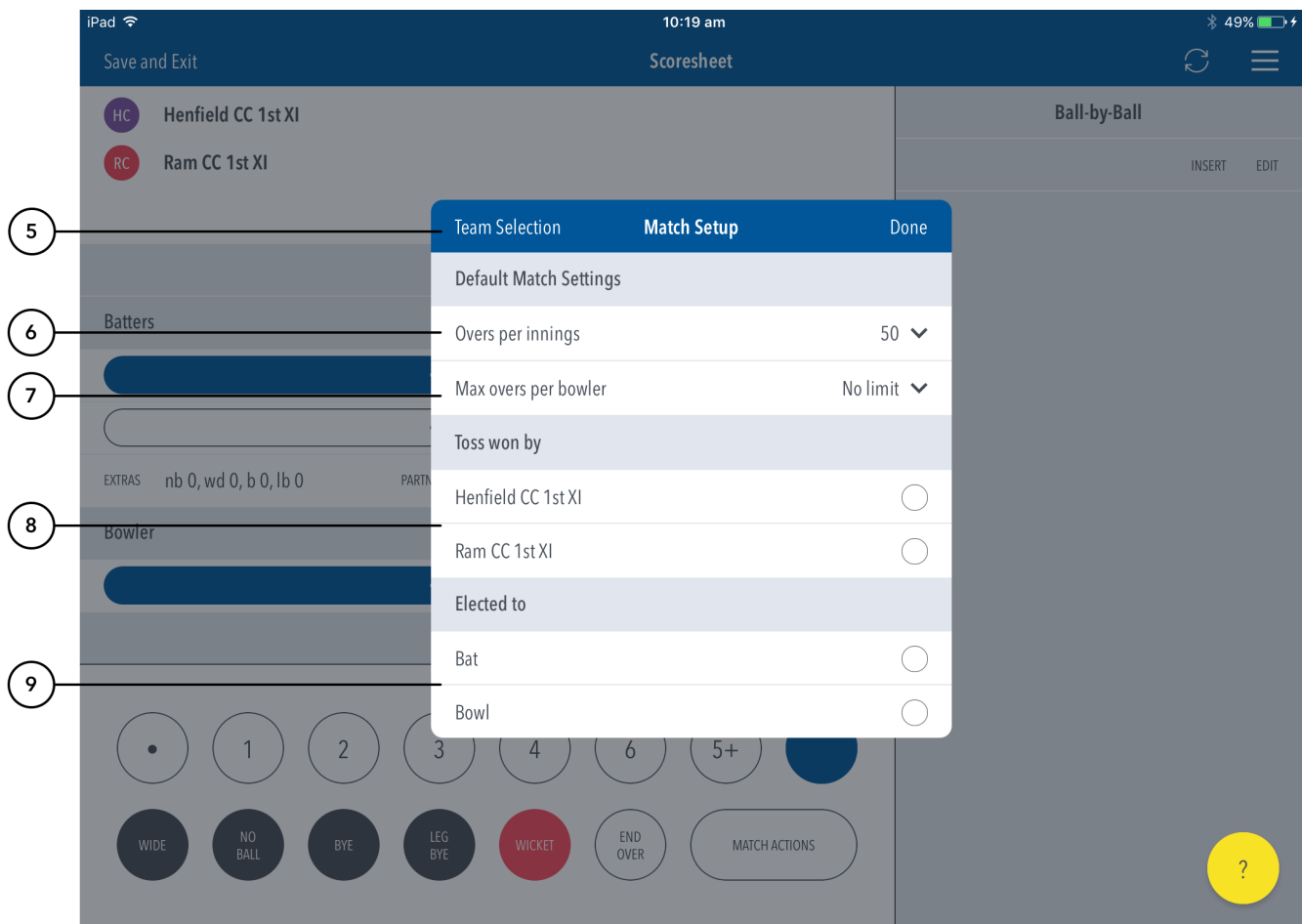
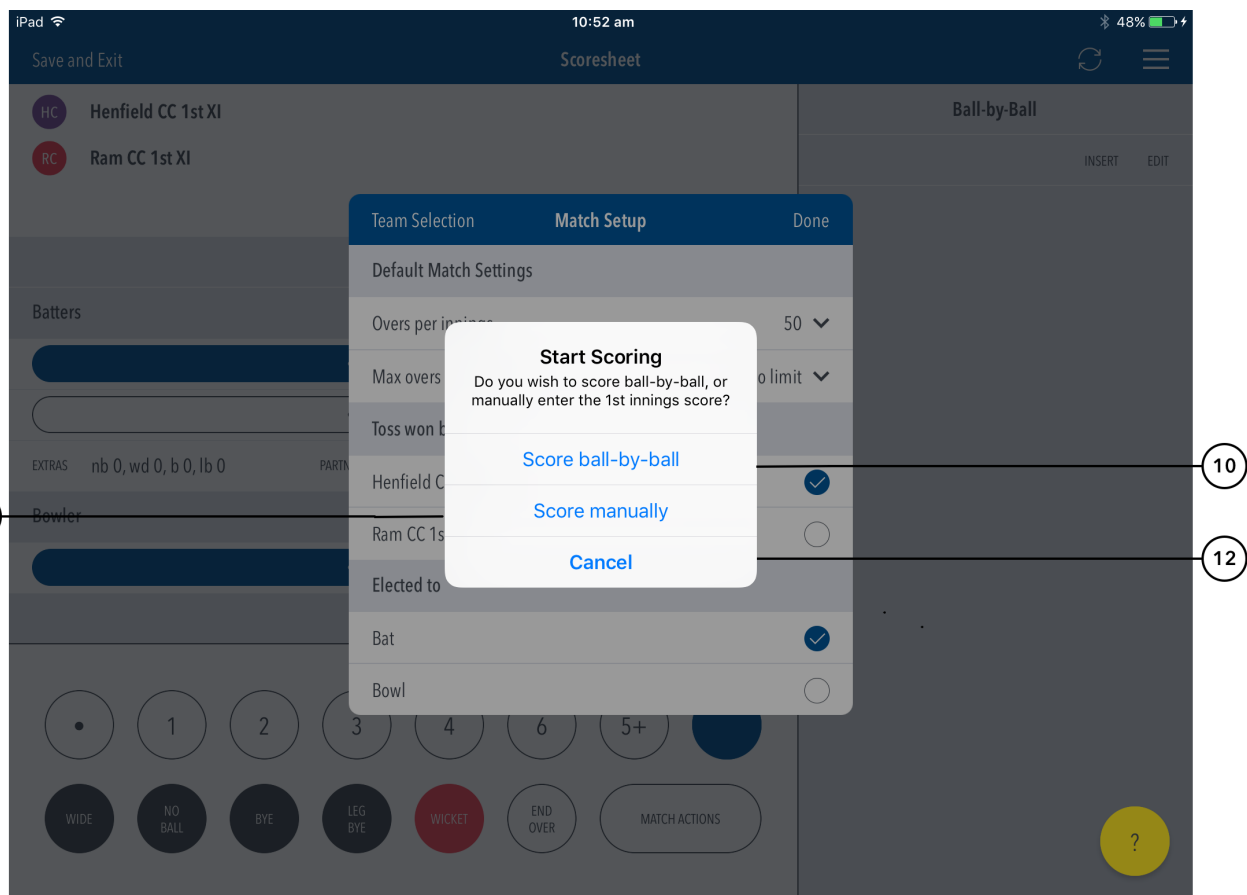


- (1) **Team Selection** area, where teams can be selected for the match.
- (2) Tap to continue setting up and select the batting side and fielding side (see 'Continue to Match Setup' for subsequent actions).
- (3) Tap to save team data and return to matches screen to resume scoring later. This match will now be found in the 'In Progress' section.
- (4) Tap 'Cancel' to continue adjusting the team selections.



Highlighted Features:

- (5) To return to the [Team Selection](#) page, tap the button.
- (6) To set Overs Per Inning, tap on the downward-facing arrow and choose from options such as: No limit, 20, 25, 30, 35, 40, 45, 50.
- (7) To set Max Overs Per Bowler, tap on the downward-facing arrow and choose from options such as: No limit, 1, 2, 3, 4, 5, 6, 7, 8, 9, 10.
- (8) To select who won the Toss, tap on the Team name.
- (9) To select decision of the Toss winner, tap on Bat or Bowl.



Highlighted Features:

- (10) Directs to ball-by-ball scoring to score the 1st innings live.
- (11) Directs to 1st innings manual score entry to enter total Overs, Wickets and Runs.
- (12) Cancels option to return to Match Setup page.